



# TAHTAN





## INTRODUCTION

**Tahtan** was incorporated in 1994, in Pakistan. After careful evaluation of the prevailing trends and future growth potential in the regional construction business, it was decided to expand operations in the Gulf Region also. Incorporation of Tahtan in the UAE is a step in this direction.

The company has now evolved to become a multifaceted organization providing comprehensive and improved services in general and specialized construction fields. We offer our services both to the owner/clients and to the EPC/General contractors.



## EXPERTISE exist in the fields of

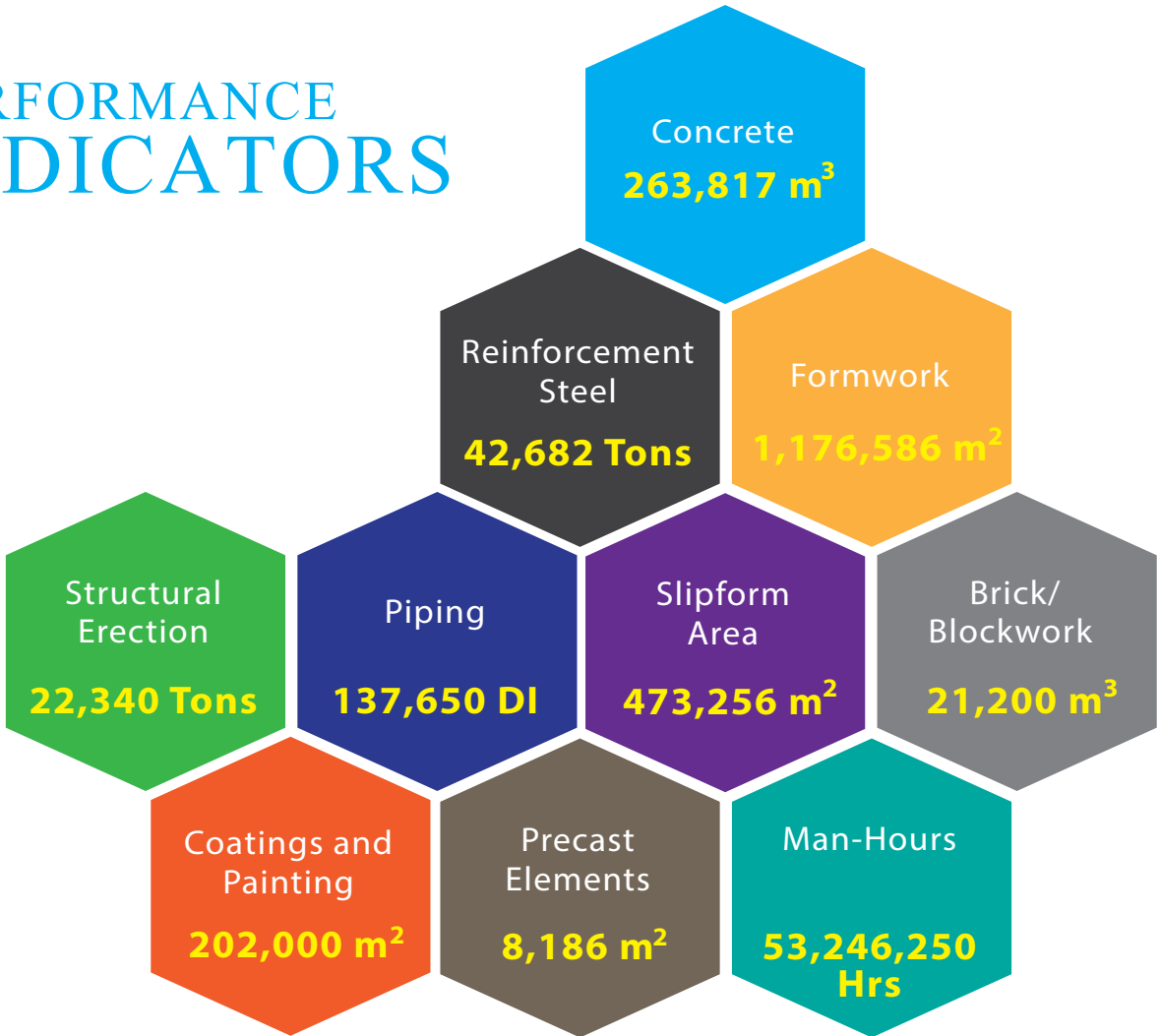
- General Construction
- Slipform Construction
- Structural Erection
- Piping & Supports
- Coating Systems & Painting



## MISSION STATEMENT

**Tahtan** thrives on continuous improvement and innovation. Elaborate planning, professional integrity, highest quality and best HSE standards coupled with an always “**can do**” approach are the core fundamentals of Tahtan’s functionality.

# PERFORMANCE INDICATORS



## PROJECTS (PAKISTAN)

---

Project	Description	Year
Tariq Float Glass Industries, Shiekhupura	General Construction - Slipform - Structure	2012
Fatima Fertilizer, NP Plant, Sadiqabad	General Construction - Slipform	2011
Mehran Sugar, Hyderabad	Slipform	2010
Engro Fertilizer, enVen 1.3, Deharki	General Construction - Slipform - Structure - Piping	2010
Fauji Cement, Jang Bahtar	Slipform	2009
PAEC Project, Joharabad	General Construction - Slipform	2008
Stiefel Laboratories, Lahore	General Construction - Project Management	2008
Kohat Cement, Line II, Kohat	General Construction - Slipform	2007
Bestway Cement, Line II, Chakwal	General Construction - Slipform - Structure	2007
D.G. Cement, Chakwal	Slipform	2006
Bestway Cement, Line I, Chakwal	General Construction - Slipform - Structure	2006
Pakistan Cement, Chakwal	Slipform	2006
Maple Leaf Cement, Line II, Mianwali	General Construction - Slipform	2006
Niralla Dairies, Tandianwala	General Construction - Slipform - Structure	2004
Maple Leaf Cement, White Plant, Iskanderabad, Mianwali	General Construction - Slipform	2003
Office Buildings & Villas, Lahore	General Construction	2002
Housing Unit, Lahore	General Construction	2001
Pak American Fertilizer, Iskanderabad, Mianwali	General Construction - Slipform - Structure - Piping	1998
Water Towers, Motorway Service Area	General Construction - Slipform	1998
Maple Leaf Cement, Line I, Iskanderabad, Mianwali	General Construction - Slipform - Structure	1997
Lucky Cement, Pezu	General Construction - Slipform - Structure	1996
Muzaffar Garh Thermal Power	General Construction - Structure - Piping	1994
PAEC Project, KCP II, Joharabad	Slipform - Structure	1994

## PROJECTS (UAE)

---

Project	Description	Year
Borouge P3-A Project, Ruwais, Abu Dhabi	Structure - Piping - Supports	In Progress
SGDP, Shah, Abu Dhabi (Client Approval in process)	General Construction - Structure - Piping	In Progress

- › Currently executing two projects in UAE with combined CV of approx \$10 million.
- › Borouge P3-A Project, Scope:
  - › Piping - 50,000 DI (CS & SS)
  - › Structure Erection - 2,800 Tons
  - › Piping Supports - 200 Tons
- › SGDP, Scope:
  - › Concrete - 11,000 m<sup>3</sup>
  - › Formwork - 26,000 m<sup>2</sup>
  - › Reinforcement Steel - 880 Tons
  - › Structure Erection - 3,000 Tons



A photograph of construction workers on a site. In the foreground, a worker in a white hard hat, a red shirt, and a yellow safety vest is working on a grid of steel rebar. Other workers in blue uniforms and yellow hard hats are visible in the background, some standing on a concrete slab. A concrete pump truck is partially visible in the distance. The scene is set against a backdrop of a large-scale construction project.

## GENERAL CONSTRUCTION

Tahtan is geared up to carry out construction activities in the fields of;

- 🔵 Industrial
- 🔵 Commercial
- 🔵 Residential
- 🔵 Infrastructure



# GENERAL CONSTRUCTION

---



## Tahtan's Experience

**Tahtan** has in-depth experience in Oil & Gas, Power, Nuclear, Chemical, Fertilizer, Process & Cement Sectors.

Tahtan's experience covers the following;

- Earthworks
- Waterproofing & Treatments
- Concreting Works
- Reinforcement Steel Works
- Foundations, Trenches & Sump pits
- SOG, Suspended Slabs, Beams & Columns
- Coatings, Protections & Paints
- Brick, Block & Refractory Lining Works
- Tiling & Stone Works
- Wood Works
- MEP Works
- Water Supply
- Drainage & Sewerage



## SLIPFORM CONSTRUCTION

**Slipforming** is a particularly useful method of construction for tall R.C.C. structures as it is very efficient both in time and cost, in comparison to the conventional construction practices.

# SLIPFORM CONSTRUCTION

---

Some of the structures which are well suited to this type of construction technique include;

- › Silos,
- › Stacks/ Industrial Chimneys,
- › Prilling/ Cooling Towers,
- › Core of High Rise Buildings,
- › Containment Structures for Nuclear Plants
- › Elevators and Service Shafts,
- › Bridge Piers and Pylons, etc.
- › Shafts for Tunnels & Mining, Wind Turbines etc.
- › Caissons, Bins etc.
- › Observations, Guidance, Communication Towers etc



**Tahtan** specializes in all phases leading up to and including the actual slipform/ climbform works. This covers the design, supply and operations of slipform/ climbform systems.





## Milestones

- 1 World's Tallest Prilling Tower (To date) - 137 m
- 2 Largest Dia (Using single Integrated system) Structure Slipformed - 60 m
- 3 First Post Tensioned Slipformed Silos in Pakistan - upto 92 m height  
23 m Dia.
- 4 Rectangular Structure for Nuclear Power House - 36 m x 32 m
- 5 Tapered Chimneys/Stacks - 1,250 mm to 450 mm  
Heights 125 meters





## STRUCTURAL ERECTION

**Tahtan's** rich and varied experience in structural erections includes both quantitative as well as high level of qualitative and complex deliverables complying with stringent QHSE requirements.

## Milestones

- ① Over 22,000 Tons Steel Structures erection achieved.
- ② Planned, designed & executed erection of 485 tons of single composite structure, assembled on ground. The final elevation of placement was 114 meters.
- ③ Erection/Fixing of intricate steel structures upto 137 m elevation.
- ④ Vast Experience of working with cranes upto and including 1200 tons.
- ⑤ Proficiency and experience in use of various rigging/lifting equipments like manlifts, derricks, winches etc.



A low-angle photograph of a massive, cylindrical industrial tower under construction. The tower's surface is a light tan color with visible horizontal construction joints. At the top, a red and white checkered pattern is visible. Several large red lattice cranes are positioned around the tower, extending upwards. In the lower foreground, a metal platform or scaffolding structure is attached to the tower, supported by vertical pipes. The sky is a pale blue with some light clouds.

## PIPING & SUPPORTS

**Tahtan** is well experienced in the fabrication and erection of small to large bore pipes, both in CS & SS, and their supports, horizontal and vertical, including fixing at high elevations.



# PIPING & SUPPORTS

---

## Milestones

- 1 Over 135,000 Dia Inches Piping Fabrication & Erection.
- 2 Experience of working with Large Diameter pipes, upto 48 inches.
- 3 Experience of working at heights, upto 140 meters.
- 4 Job specific design of moving platforms & derricks/winchers to facilitate fixing of pipe and supports at intricate locations and higher elevations.
- 5 Experience in working both in CS and SS piping including small bore.



A large industrial storage tank is the central focus of the image. The upper portion of the tank is painted with a red and white checkered pattern. In the center of this pattern, the word "ENGRO" is written in a bold, green, sans-serif font, accompanied by a green leaf logo above it. The lower portion of the tank is a plain, light-colored concrete or metal surface. Scaffolding and a crane are visible around the tank, indicating it is under construction or maintenance. The sky is a clear, bright blue.

ENGRO

## PAINTING, COATINGS, INSULATION & TILING

**Tahtan** has in-depth experience of various types of applications including protective epoxys and coating system, blasting & priming of structures, waterproofing membranes/paints and industrial tiling.

# PAINTING, COATINGS, INSULATION & TILING



## Milestones

- Over 112,000 m<sup>2</sup> area Sandblasted and Painted
- Over 50,000 m<sup>2</sup> Epoxy Coatings applied on Structural Steel and Concrete surfaces.
- Industrial Tiling applied 17,000 m<sup>2</sup>.
- Insulations & Waterproofing on sub and super-structures 27,000 m<sup>2</sup>.
- Tahtan has experience of various types of applications including chequered aircraft warning paints at very high elevations.
- Tahtan has also carried Sandblasting and Painting of Concrete and Steel Structures.
- Tahtan is also well versed with the application of high quality insulations and fixing of industrial tiles.

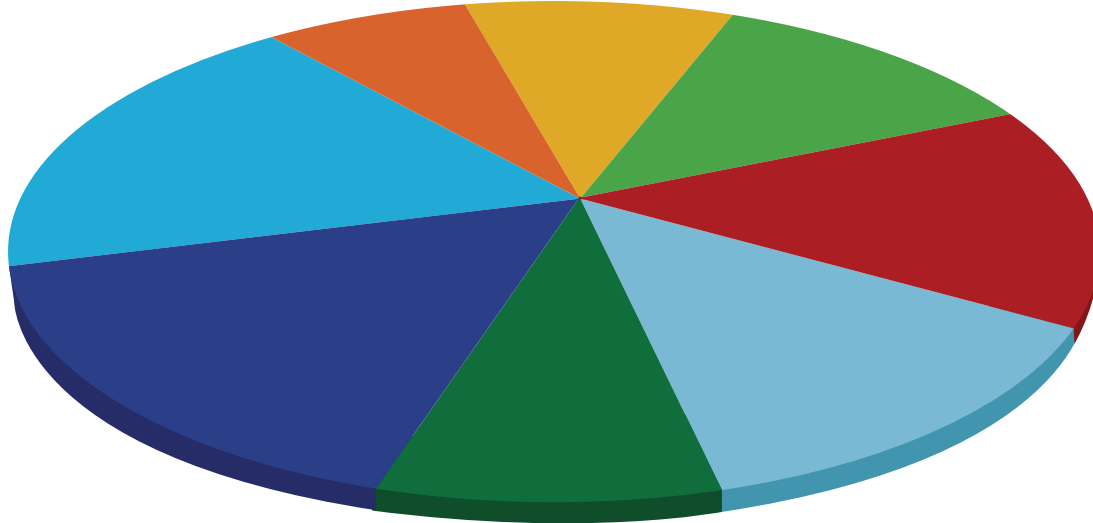
A top-down view of a meeting table. Several people's hands are visible, holding pens and pointing at documents. There are two white coffee cups on saucers. The documents contain text and a 3D pie chart. A large, semi-transparent hexagonal box is overlaid on the bottom right of the image, containing text.

## HUMAN RESOURCE

### **Manpower**

Tahtan employs over 800 personnel as Direct & Indirect, Supervisory/Engineering/Specialist staff and Management Personnel.

## Direct Personnel



■ Concreting Crew	10%	■ Rigging and Scaffolding Crew	8%
■ Reinforcement Crew	13%	■ Structure Erection Crew	16%
■ Formwork Crew	15%	■ Piping Crew	18%
■ Slipforming Crew	13%	■ Coatings & Insulations Crew	7%

## Engineering & Specialist Staff

Tahtan employs over 50 engineers and specialist staff of various disciplines

## Management/Admin & Finance

Tahtan employs approx 35 personnel working as senior management and in Admin & Finance Departments.

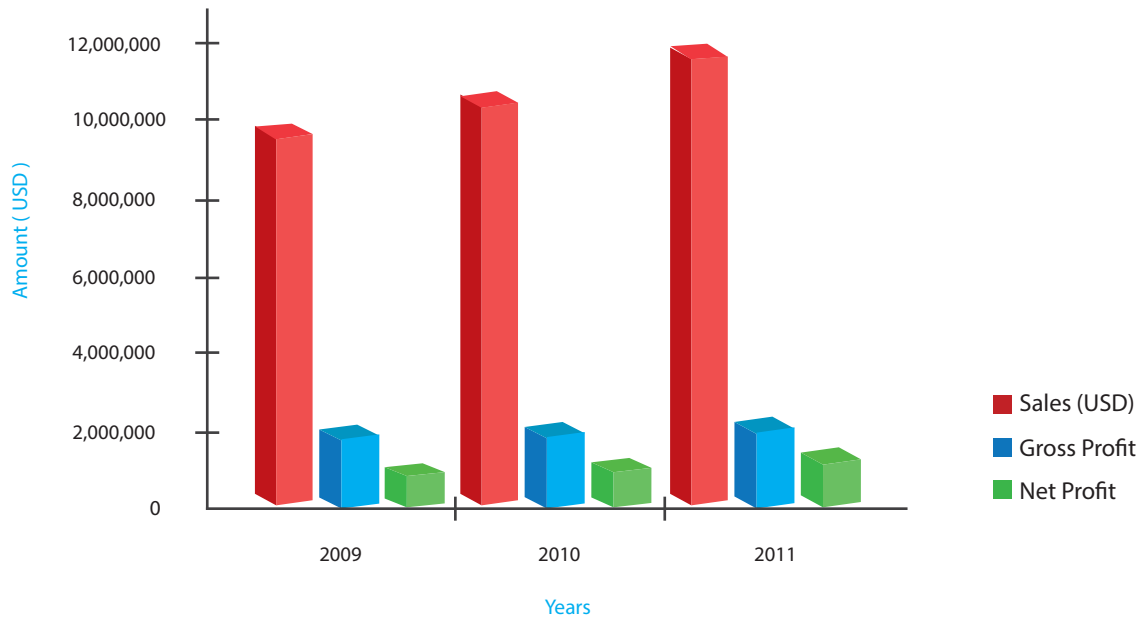


## FINANCIALS

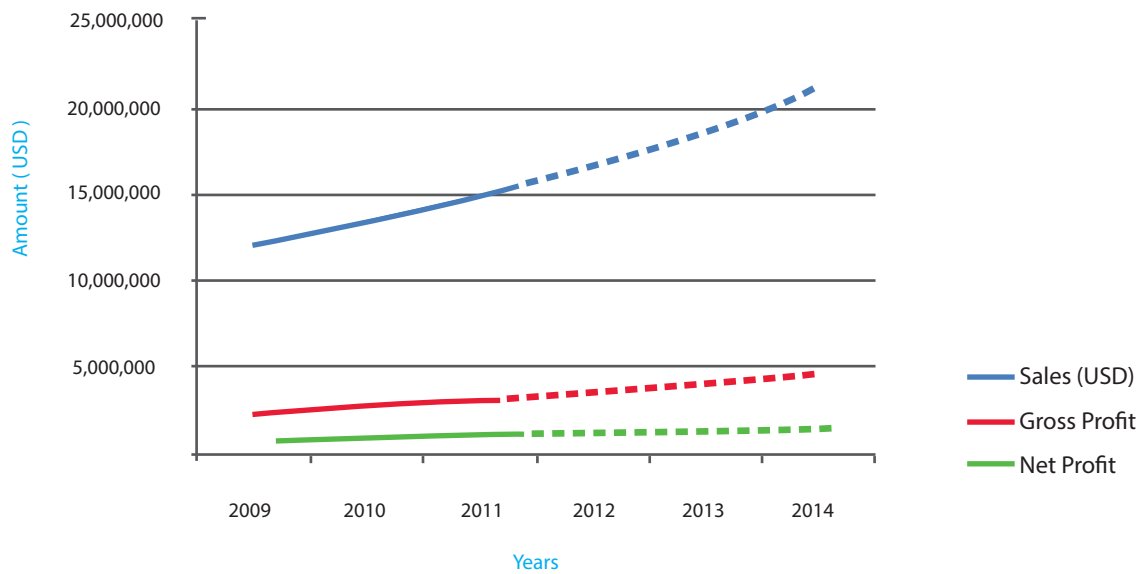
- Average Annual turnover for the last 3 years - 10.5 Million (USD)
- Average Profit percentage for last 3 years - 8.2 %
- Increase in Profit compared to previous year - 9 %

# FINANCIALS

## Sales & Profits



## Growth & Profit Projections





Excellent

Good

Fair

Poor

## QA/QC POLICY

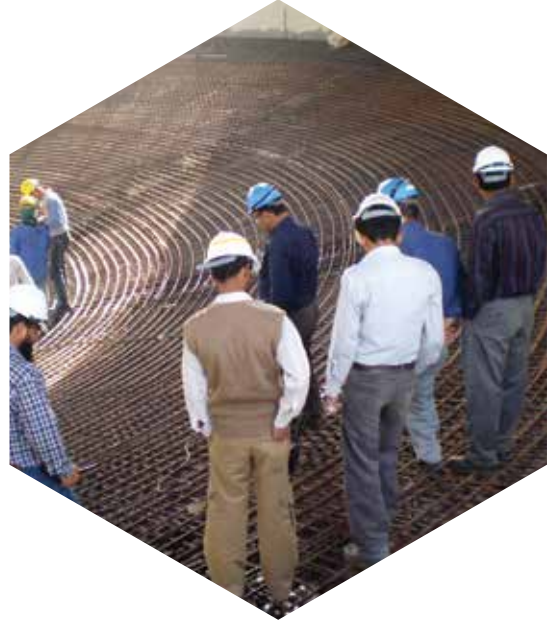
**Tahtan** is committed to complete client satisfaction and providing quality construction and services



The Company recognizes that emphasis on quality control is essential to its success, as well as being in the best interest of all employees and clients.

Tahtan's quality assurance and quality control objectives shall be achieved at office locations and sites by adhering to the following principles;

- Responsibility of quality assurance and its control rests with all employees and must be strictly adhered to at all levels.
- Implementation of Industry leading quality management and measurement systems.
- Identification and documentation of Client/Project requirements.
- Conformance to client/project requirements and compliance with applicable standards.
- Elimination of non conformances.
- Commitment to flawless execution.
- Continual improvement of Quality Assurance and Quality Control at all management levels throughout the Organization.



**Management and supervisory** personnel at each division and location shall be responsible for implementing, upholding and maintaining a rigorous quality management system to sustain this policy. Regular audits shall be carried out to determine conformance to the quality management system.

Contractors and Subcontractors shall work in accordance with the Company's quality Assurance & Control Policy.

Every employee, shares equal responsibility for quality assurance and control within his/her domain for flawless execution in all aspects of Company's operations.



## HSE POLICY

**Tahtan's** vision is an Incident and Injury Free workplace, with no harm to people and structures while protecting the surrounding environment.

# HEALTH, SAFETY AND ENVIRONMENT POLICY

---

Tahtan is committed to providing a safe and healthy workplace and conducting its business activities in a manner that protects the environment. To achieve these goals, all Company locations shall adhere to the following principles:

- Identification and evaluation of all HSE hazards or aspects and the management of those risks to reduce their impacts to acceptable levels.
- Compliance with all applicable HSE legislation.
- Prevention of incidents, injuries, and pollution.
- Intolerance of the conditions and behaviours that contribute to incidents and injuries.
- Reduction of waste and conservation of resources.
- Recording and communicating HSE performance throughout the organization.
- Continual improvement of HSE performance.



**The CEO and senior management** shall visibly uphold these principles throughout the Company and integrate them into the Company's HSE Policy and Management System. The Board of Directors of the Company shall regularly review HSE performance.

**Management and supervisory** personnel at each division and location shall be responsible for implementing and maintaining the Company's HSE Policy and Management System. Contractors and Subcontractors shall work in accordance with the Company's HSE Policy and comply with applicable HSE legislation. Regular HSE audits shall be done to determine conformance to the HSE Management System.

**Every employee**, whose work may create a significant HSE impact, shall be trained and held accountable for complying with the Company's HSE Policy and related procedures, practices, instructions and rules. Working safely and in an environmentally appropriate manner are conditions of employment. Each employee has a duty to report workplace conditions or practices that pose a safety hazard or threaten the environment and to take reasonable actions to alleviate such risks.

Everyone is responsible for recognizing that by risking incident or injury, they are putting in jeopardy what they value and those they care for.



**TAHTAN**

**Tahtan General Contracting LLC**

P.O. Box: 92433

Abu Dhabi, UAE.

Phone: (971) 2 553 5199

Fax: (971) 2 553 5277

**Tahtan (Pvt) Ltd**

18-CCA, 2nd Floor, Sector J,

Phase 5, DHA, Lahore

Phone: (92) 423 865 5335-6

Fax: (92) 423 572 6765

For more information, please visit  
the Tahtan web site at:

**[www.tahtan.com](http://www.tahtan.com)**

or email at:

**[info@tahtan.com](mailto:info@tahtan.com)**